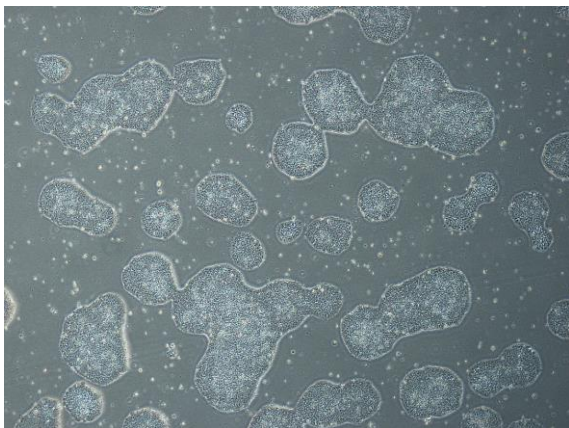
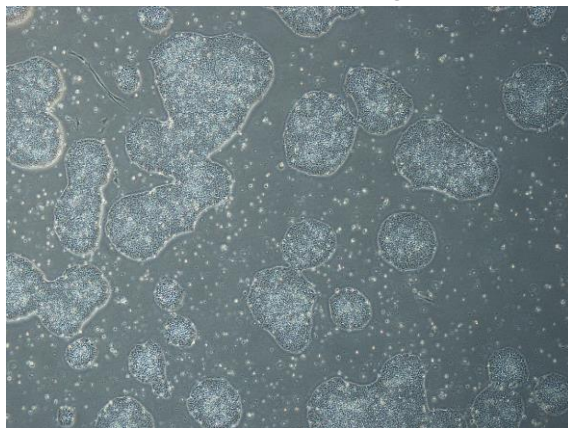


【 CiRA-j-1270 】 Morphology of iPSC colonies

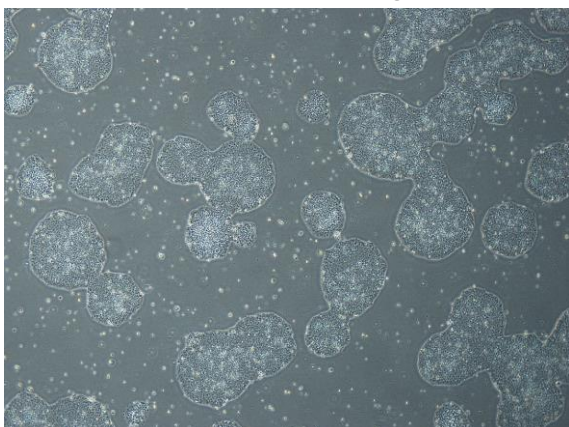
CiRA-j-1270-A: passage-3



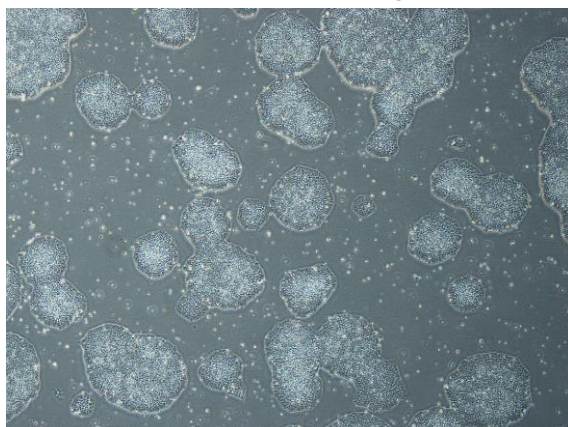
CiRA-j-1270-B: passage-3



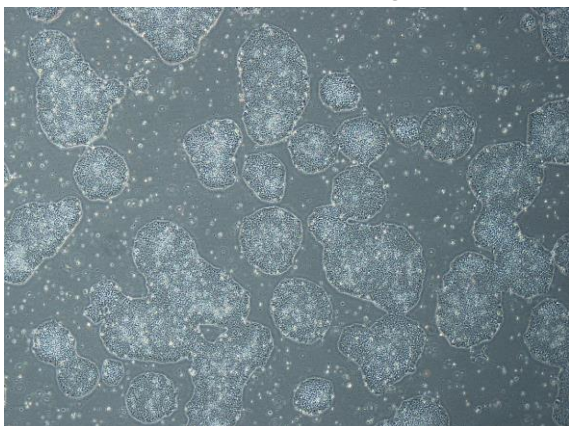
CiRA-j-1270-C: passage-3



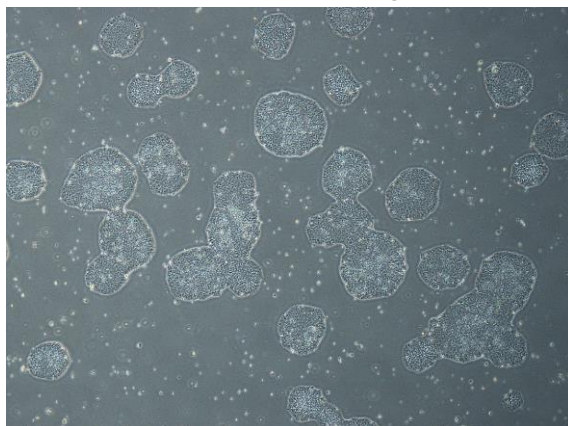
CiRA-j-1270-D: passage-3



CiRA-j-1270-E: passage-3



CiRA-j-1270-F: passage-3



(All images were captured at 4x magnification)